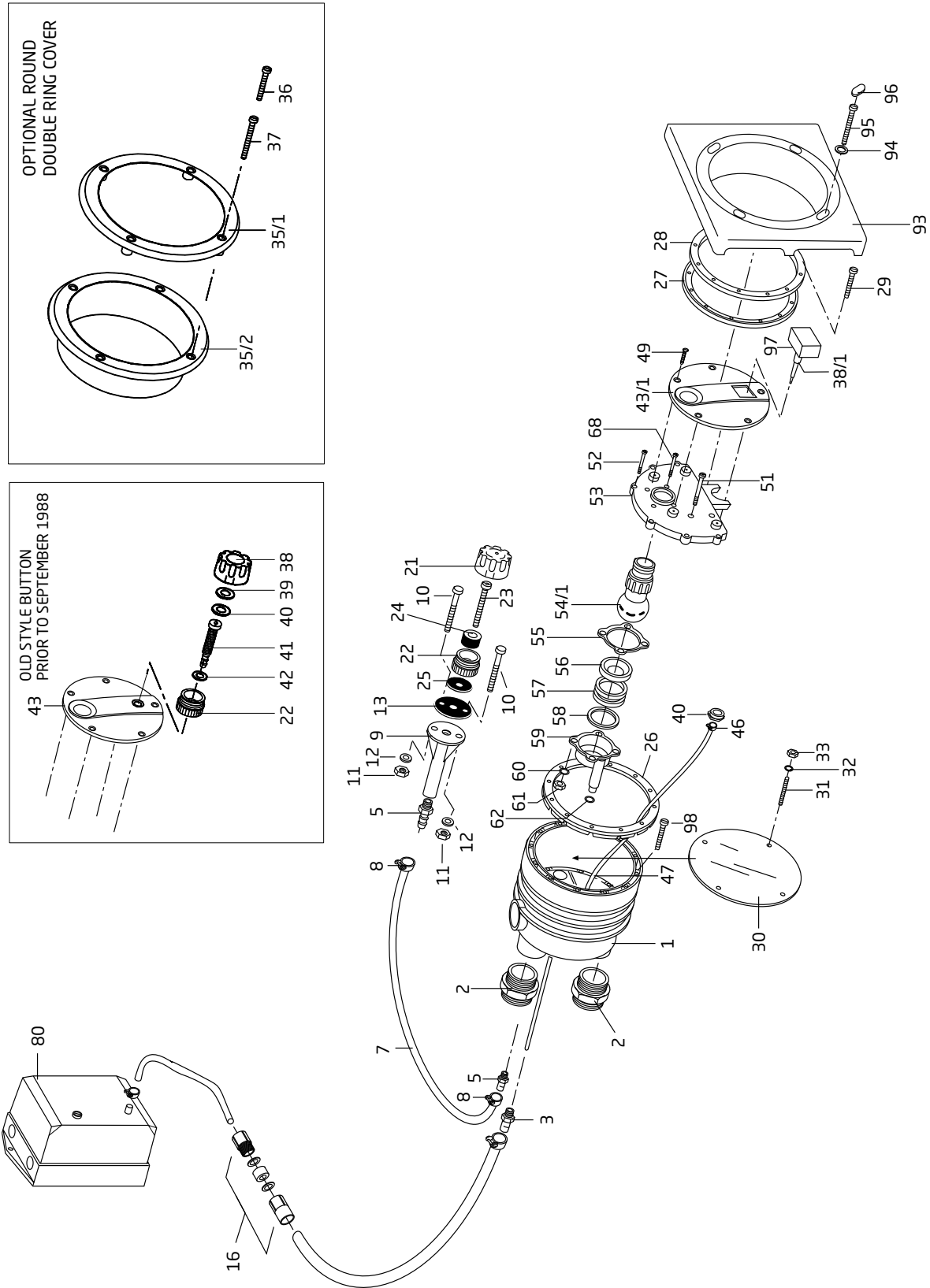


SwimJet System



SwimJet System

Order #	Drawing Number	Qty Required	Description	List Price
2303001000	(1-5)	1	JET HOUSING WITH ADAPTORS	\$ 740.30
5862437590	2	2	ADAPTOR - MALE, HOUSING PVC 2" x 75mm / 3"	34.80
2991400044	3	1	ADAPTOR - MALE, HOUSING PVC 1/2"	1.10
2301001005	5	2	NIPPLE - HOSE AIR REGULATOR, PLASTIC 1/4"	4.90
2303004000	(5-13)	1	HOLDER WITH HOSE SUBASSEMBLY	84.10
2301001007	7	1	HOSE - AIR REGULATOR 8 x 3mm (1.4 METERS)	7.70
2301001008	8	2	CLAMP - HOSE, AIR REGULATOR 14/9 ZY	5.20
2301001009	9	1	HOLDER - AIR REGULATOR	29.20
5879630630	10	2	BOLT - AIR HOLDER, PHILLIPS/PAN M6 x 30 SS	3.00
5879340600	11	2	NUT - AIR HOLDER BOLT M6, A2 SS	0.70
5879021060	12	2	WASHER - AIR HOLDER M6	0.40
2301001013	13	1	GASKET - AIR HOLDER 60 x 11 x 2mm	1.80
5882831000	16	1	AIR TUBING SEAL ASSEMBLY	5.30
2301002000	(21-25)	1	AIR REGULATOR (SUBASSEMBLY COMPLETE) - WHITE	55.20
2301002000B	(21.1-25)	1	AIR REGULATOR (SUBASSEMBLY COMPLETE) - BLACK	55.20
2301002021	21	1	TOP PART - AIR REGULATOR - WHITE	14.80
2301002029	21.1	1	TOP PART - AIR REGULATOR - BLACK	14.80
2301002022	22	1	BOTTOM PART - AIR REGULATOR - WHITE	10.60
2301002028	22.1	1	BOTTOM PART - AIR REGULATOR - BLACK	10.60
2301002023	23	1	BOLT W/HOLE - AIR REGULATOR, BRASS M10 x 80	22.50
2301002024	24	1	RING - HOSE, AIR REGULATOR 16 x 30 x 18mm	4.40
2301002025	25	1	GASKET - AIR REGULATOR 42 x 11 x 2mm	3.40
2303000026	26	1	GASKET WITH KNOBS - JET HOUSING	80.10
2304700027	27	1	GASKET - CLAMPING RING	104.40
2303000028	28	1	RING - CLAMPING	65.20
5870840625	29	10	BOLT - CLAMPING RING, PHILLIPS/BARREL M6 x 25 A2	1.70
2303000030	30	1	COVER - GUNITE	21.00
5805510680	31	4	STUD - GUNITE COVER, ALL THREAD, ZINC M6 x 80	3.10
5809021060	32	4	WASHER - STUD, GUNITE COVER, ZINC M6	0.40
5879340600	33	4	NUT - STUD, GUNITE COVER M6 A2	0.70
2302001900K	38/1	1	PNEUMATIC BUTTON	113.90
2302001140	40	1	NUT - PNEUMATIC BOTTOM, PLASTIC	3.40
2304001044	43/1	1	COVER - NOZZLE	28.30
2302001046	46	1	CLAMP - HOSE, PNEUMATIC BUTTON 8.7mm	7.70
2300202061	47	1 Roll	AIR TUBE 4 x 1.5mm (PRICED PER ROLL)	26.00
5879724816	49	4	TAPPING SCREW - NOZZLE COVER, PHILLIPS 4.8 x 16 A2	0.60
5879850697	51	5	BOLT - NOZZLE HOUSING, PHILLIPS/BAR M6 x 97mm A2	15.80
5870840625	52	6	BOLT - NOZZLE HOUSING, PHILLIPS/BAR M6 x 25mm A2	1.70
2304002000	(53-68)	1	HOUSING - NOZZLE, COMPLETE	404.70
2304002054	53	1	HOUSING - NOZZLE	121.80
2302002854	54/1	1	NOZZLE - ADJUSTABLE FLOW 40 mm	27.20
2302002060	55	1	IT GASKET - TENSION CUP 103 x 81.5 x .6mm	8.00
2302002056	56	1	SEAT - NOZZLE	7.30
2302002157	57	2	SPACER - NOZZLE 4.0mm	4.00
2302002158	58	1	SPACER - NOZZLE 1.5mm	1.80
2302002059	59	1	TENSION CUP - NOZZLE	47.50
5871270600	60	4	WASHER - LOCK, TENSION CUP M6 A4	0.40
5879340600	61	4	NUT - TENSION CUP M6 A2	0.70
2920141240	62	1	O-RING - TENSION CUP 11 x 2.5mm	1.10
5870840625	68	4	BOLT - TENSION CUP, PHILLIPS M6 x 25mm A2	1.70
2920280728	80	1	CONTROL BOX - BJC-7-GFCI+CP	1,164.00
2304005236	93	1	COVER - RECTANGULAR	60.80
5871250600	94	4	WASHER - RECTANGULAR COVER M6 A4	0.50
5879850616	95	4	BOLT - RECTANGULAR COVER, PAN, PHILLIPS M6 x 16mm	2.10
5879850660	95	4	BOLT - RECTANGULAR COVER, PAN, PHILLIPS M6 x 60mm	9.00
2304005237	96	1	PLUG - RECTANGULAR COVER	3.40
2302001301	97	2	COVER - BUTTON (cover to panel)	20.00

SwimJet System

Order #	Drawing Number	Qty Required	Description	List Price
5879630630	98		BOLT - JET HOUSING, PHILLIPS/PAN M6 x 30mm SS	\$ 3.00
2302005003	(94-97)	1	KIT - RECTANGULAR COVER (COMPLETE)	120.80
2300003010	NOT SHOWN	1	MASSAGE HOSE - 5 FT WITH PULSATOR & HAND GRIP	181.60
2300003310	NOT SHOWN	1	MASSAGE HOSE - 15 FT WITH PULSATOR & HAND GRIP	286.80
2300022010	NOT SHOWN	1	CAP - NOZZLE & HAND GRIP, CLOSE OFF	68.60

Optional Round Style, Double Ring, Anti-entrapment Cover For Curved Pool Walls

2304005135	35/1	1	ROUND RING COVER WITH SPACERS	130.20
2304005235	35/2	1	ROUND RING COVER	57.10
5879650640	36	4	BOLT - ROUND COVER, FLAT HEAD PHILLIPS M6 x 40mm	2.50
5879650680	37	4	BOLT - ROUND COVER, FLAT HEAD PHILLIPS M6 x 80mm	10.20
2302005004	NOT SHOWN	1	KIT - ROUND RING COVER (COMPLETE)	246.10

Parts Listed Below Are Unique To The BaduJet M Shipped Prior To October, 1994

2302001800	38	1	PNEUMATIC BUTTON (BLACK)	103.00
2304001043	43	1	COVER - NOZZLE	39.90
5879724816	49	1	TAPPING SCREW - NOZZLE COVER 4,8 x 16, A2	0.60
2304002053	53	1	HOUSING - NOZZLE	121.80

Parts Listed Below Are Unique To The BaduJet M Shipped Prior To The September, 1988

2301002022	22	1	BOTTOM PART - PNEUMATIC BUTTON	10.60
2301002200	38	1	TOP PART - PNEUMATIC BUTTON	13.20
2302001039	39	1	RING-E - PNEUMATIC BUTTON	22.00
2302001040	40	1	MEMBRANE-E - PNEUMATIC BUTTON	1.60
2302001041	41	1	BOLT W/HOLE - PNEUMATIC BUTTON, BRASS M10	20.30