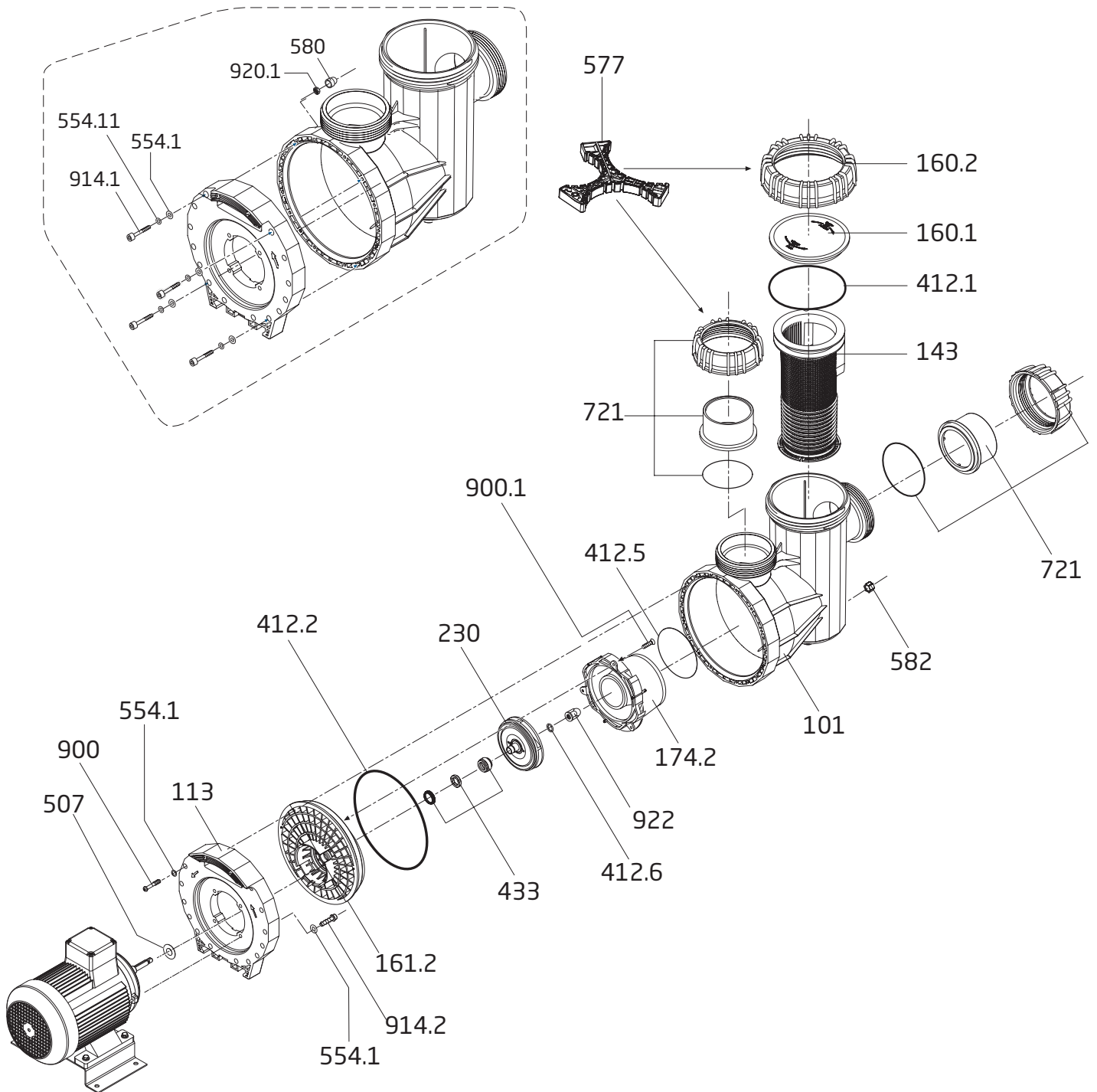


MODEL 95

Swimming Pool Pump

Model 95-IX & 95-X



MODEL 95



Swimming Pool Pump

Model 95-IX & 95-X

Order #	Drawing Number	Qty Required	Description	List Price
2902016020	160.2	1	LOCK RING - LID	\$ 40.40
2902016010	160.1	1	LID - CLEAR	38.90
2902041210	412.1	1	O-RING - LID 175 x 6.5mm	38.20
2902099800	577	1	SPANNER - LID, UNIONS	48.90
2902014300	143	1	BASKET - ONE PIECE	24.60
2902072154	721	2	UNION HALF PACKAGE - COMPLETE	65.60
2901158200	582	1	DRAIN CAP 3/8" WITH GASKET - CASING	2.50
2902010158L	101	1	CASING <i>(Before 2/28/2017)</i>	288.60
2902010158	101.1	1	CASING <i>(After 2/27/2017)</i>	288.60
5879120665	914.1	4	BOLT - CASING M6 x 65mm (ALLEN HEAD)	7.00
5871250600	554.11	4	WASHER - CASING BOLT M6	0.40
2921192015	920.1	4	NUT - M6 SERRATED - CASING BOLT	1.30
2902058000	580	4	PROTECTIVE CAP - CASING BOLT	2.40
2902041252A	412.5	1	O-RING - DIFFUSER 123 x 5mm	2.60
2902017422	174.2	1	DIFFUSER	51.60
2923223025	230	1	IMPELLER (-IX) 5.75 THP (5.0 HP S.F. 1.15) 115-122/20mm	78.50
2902023008	230.1	1	IMPELLER (-X) 8.6 THP (7.5 HP S.F. 1.15) 3 PHASE 127/20mm	78.50
2923223037	230.2	1	IMPELLER (-X) 8.6 THP (7.5 HP S.F. 1.15) 1 PHASE 125/20mm	78.50
2923541229	412.6	1	O-RING - SHAFT 16.9 x 2.75mm	4.70
2902041220	412.2	1	O-RING - CASING 265 x 6mm	43.00
2923592200	922	1	NUT - IMPELLER - PLASTIC W/ BRASS INSERT M12	15.10
2920343310	433	1	MECHANICAL SEAL (20mm) COMPLETE	51.90
2902016122	161.2	1	SEAL HOUSING 135mm	56.20
5879120835	914.2	4	BOLT - MOTOR ALLEN HEAD M8 x 35mm	3.60
5871250800	554.1	20	WASHER - MOTOR BOLT - CASING SCREW 8.4mm	0.50
2902011300	113	1	FLANGE	65.50
2920850702	507	1	SLINGER (SPLASH RING) 45 x 18 x 4mm	3.40
5879825522	900.1	3	SCREW - DIFFUSER 5.5 x 22mm	2.30
2921690002	900	12	SCREW - CASING - ALLEN HEAD M7 x 48mm	2.60
2991000013	NOT SHOWN	4	WASHER LOCK - 5/16" SS - BASE <i>(After 2/27/2017)</i>	0.30
2923000003	NOT SHOWN	1	BASE SS <i>(After 2/27/2017)</i>	102.00
2991000011	NOT SHOWN	4	WASHER - FLAT 5/16" x 3/4" OD SS - BASE <i>(After 2/27/2017)</i>	0.20
2991000015	NOT SHOWN	4	BOLT - 5/16" - 18 x 1" SS - BASE <i>(After 2/27/2017)</i>	1.60
2991000034	NOT SHOWN	4	NUT - 5/16" - 18 SS - BASE <i>(After 2/27/2017)</i>	0.60
Motor Units For The Model 95				
2195360001M		1	MOTOR UNIT COMPLETE (95-IX) 5.0 HP, SINGLE PHASE	\$ 2,306.00
2195360007M		1	MOTOR UNIT COMPLETE (95-IX) 5.0 HP, THREE PHASE	2,150.00
2195370001M		1	MOTOR UNIT COMPLETE (95-X) 7.5 HP, SINGLE PHASE	3,281.00
2195370007M		1	MOTOR UNIT COMPLETE (95-X) 7.5 HP, THREE PHASE	2,254.00

Go Kits For The Model 95

SPK-95-GOKIT	1	KIT INCLUDES THE FOLLOWING PARTS:	148.00
		2902041210 - O-RING LID 175 x 6.5mm	
		2920141252A - O-RING DIFFUSER 123 x 5mm	
		2920343310 - MECHANICAL SEAL (20mm) CPL	
		2902041220 - O-RING CASING 265 x 6mm	
		2902041252 - O-RING UNION 123 x 6mm	
		2923541229 - O-RING SHAFT 16.9 x 2.75mm	

MODEL 95



Swimming Pool Pump

Model 95-IX & 95-X

REPLACEMENT MOTORS

Order #	MFR #	Model	HP	S.F.	THP	Volts	Motor/Frame	List Price
<i>SINGLE SPEED</i>								
08471682008	8471682008	-IX	5.0	1.15	5.75	208-230	TEFC 112M	\$1,962.00
0812930846	0812930846	-X	7.5	1.15	8.625	208-230	TEFC 112M	2,802.20
<i>THREE PHASE</i>								
0821869911	498950	-IX	5.0	1.15	5.75	208-230/460	TEFC 112M	1,834.20
08217475102	498901	-X	7.5	1.15	8.625	208-230/460	TEFC 112M	1,854.00