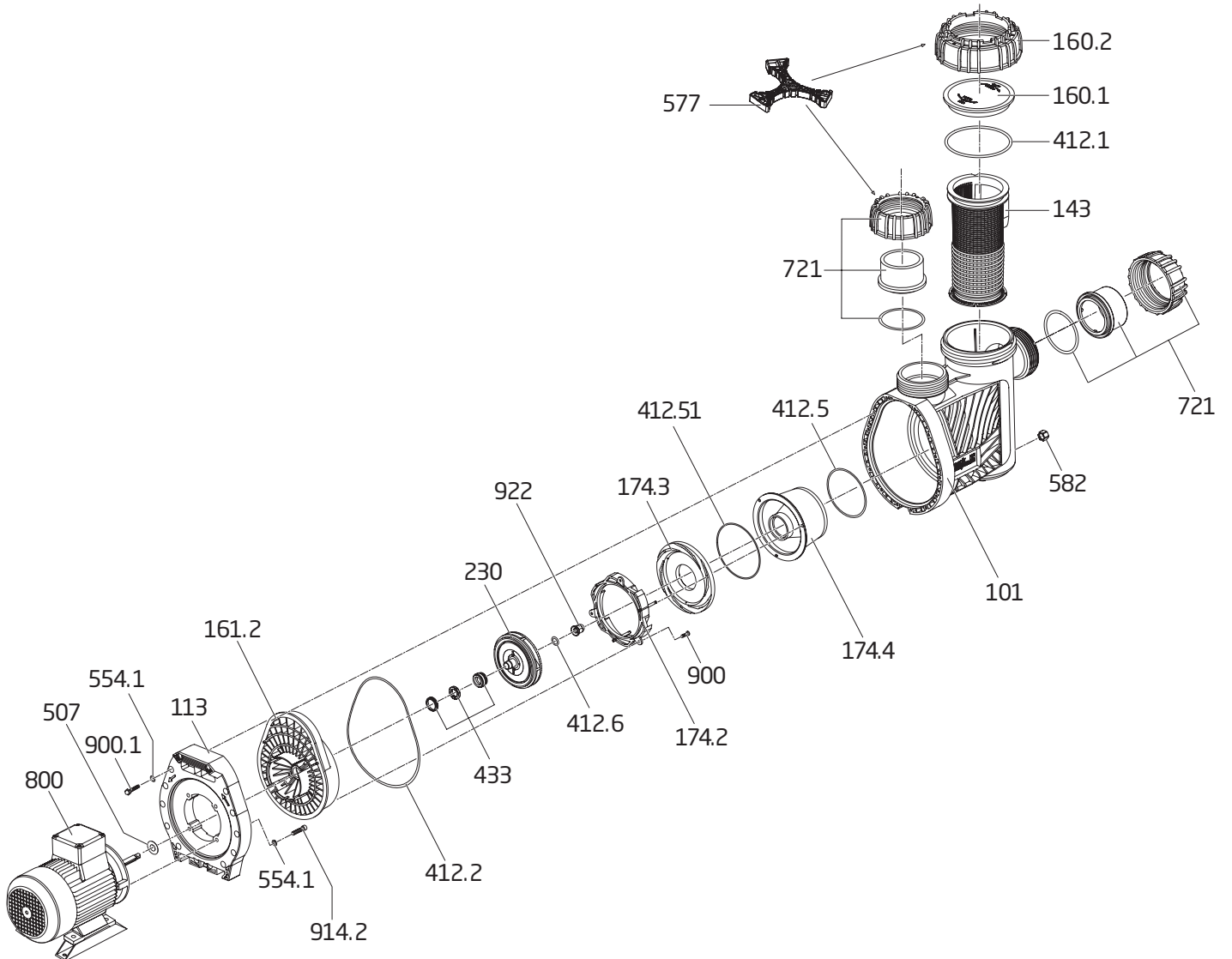


MODEL 94

Swimming Pool Pump



MODEL 94



Swimming Pool Pump

PART NUMBER	DRAWING NUMBER	QTY REQUIRED	DESCRIPTION	LIST PRICE
2921516022	160.2	1	LOCK RING - LID	\$ 71.50
2921516012	160.1	1	LID - CLEAR	39.40
2921541210	412.1	1	O-RING - LID 148 x 6.5mm	12.00
2902099800	577	1	SPANNER - LID, UNIONS	46.30
2921514302	143	1	BASKET - ONE PIECE	35.50
2500300922	721	2	SET - 3" UNION COMPLETE (INCLUDES NUT, O-RING, & ADAPTOR)	46.90
2500300921	721	1	3" UNION PKG CPL - (SUCTION & DISCHARGE INCLUDES NUT, O-RING, & ADAPTOR)	93.60
2901158200	582	1	DRAIN CAP 3/8" WITH GASKET - CASING	2.40
2921510102	101	1	CASING	590.50
5871250800	554.1	18	WASHER - CASING & FLANGE BOLT 8.4mm A4	0.50
2902041252A	412.5	1	O-RING - DIFFUSER 123 x 5mm	2.50
2902041251	412.51	1	O-RING - CONFUSOR 145 x 2.5mm	12.40
2902017425	174.2	1	DIFFUSER	12.40
2902017424	174.3	1	COVER DISK - DIFFUSER	12.70
2902017421	174.4	1	CONFUSOR FOR DIFFUSER	45.90
2902012812	230	1	IMPELLER (-VIII) 5.0 HP S.F. 1.15 120 / 12.8mm	54.90
2902023013	230.1	1	IMPELLER (-IX) 5.0 HP S.F. 1.15 128-126 / 12mm	62.10
2923541229	412.6	1	O-RING - SHAFT 16.9 x 2.75mm	4.40
2921541226	412.2	1	O-RING - CASING 240 x 6.5mm	18.40
2923592200	922	1	NUT - IMPELLER - PLASTIC W/ BRASS INSERT M12	14.30
2920343310	433	1	MECHANICAL SEAL (20mm) COMPLETE	49.10
2921516120	161.2	1	SEAL HOUSING	126.70
5879120841	914.2	4	BOLT - MOTOR ALLEN HEAD M8 x 40mm	3.60
2921511300	113	1	FLANGE	151.10
2920850702	507	1	SLINGER (SPLASH RING) 45 x 18 x 4mm	3.30
5879825522	900	3	SCREW - DIFFUSER 5.5 x 22mm	2.20
2921690002	900.1	14	SCREW - CASING - ALLEN HEAD M7 x 48m	2.50

MOTOR UNIT FOR THE MODEL 94

2194360002M	1	MOTOR UNIT COMPLETE (94-IX) 5.0 HP, SINGLE PHASE	2,303.00
-------------	---	--	----------

REPLACEMENT MOTORS

PART NUMBER	MFR #	MODEL	THP	FULL RATE		VOLTS	SPEED	FRAME	LIST PRICE
				HP	S.F.				
<u>SINGLE PHASE</u>									
B63SVABA1022	B63SVABA-1022	-VIII	5.0	4.0	1.25	230	2-speed	56 (ODP)	\$ 890.00
K63FLD5114	K63FLD-5114	-VIII	5.0	4.0	1.25	208-230	single	56 (ODP)	812.70
08471682008	8471682008	-IX		5.0	1.15	208-230	single	112M (TEFC)	1,856.20
<u>THREE PHASE</u>									
080000DS98	DS98	-VIII	5.0	4.0	1.25	208-230/460	single	56 (ODP)	890.00
08217475101	498900	-IX		5.0	1.15	208-230/460	single	100L (TEFC)	1,652.70