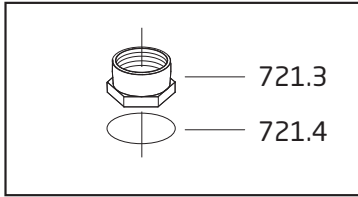
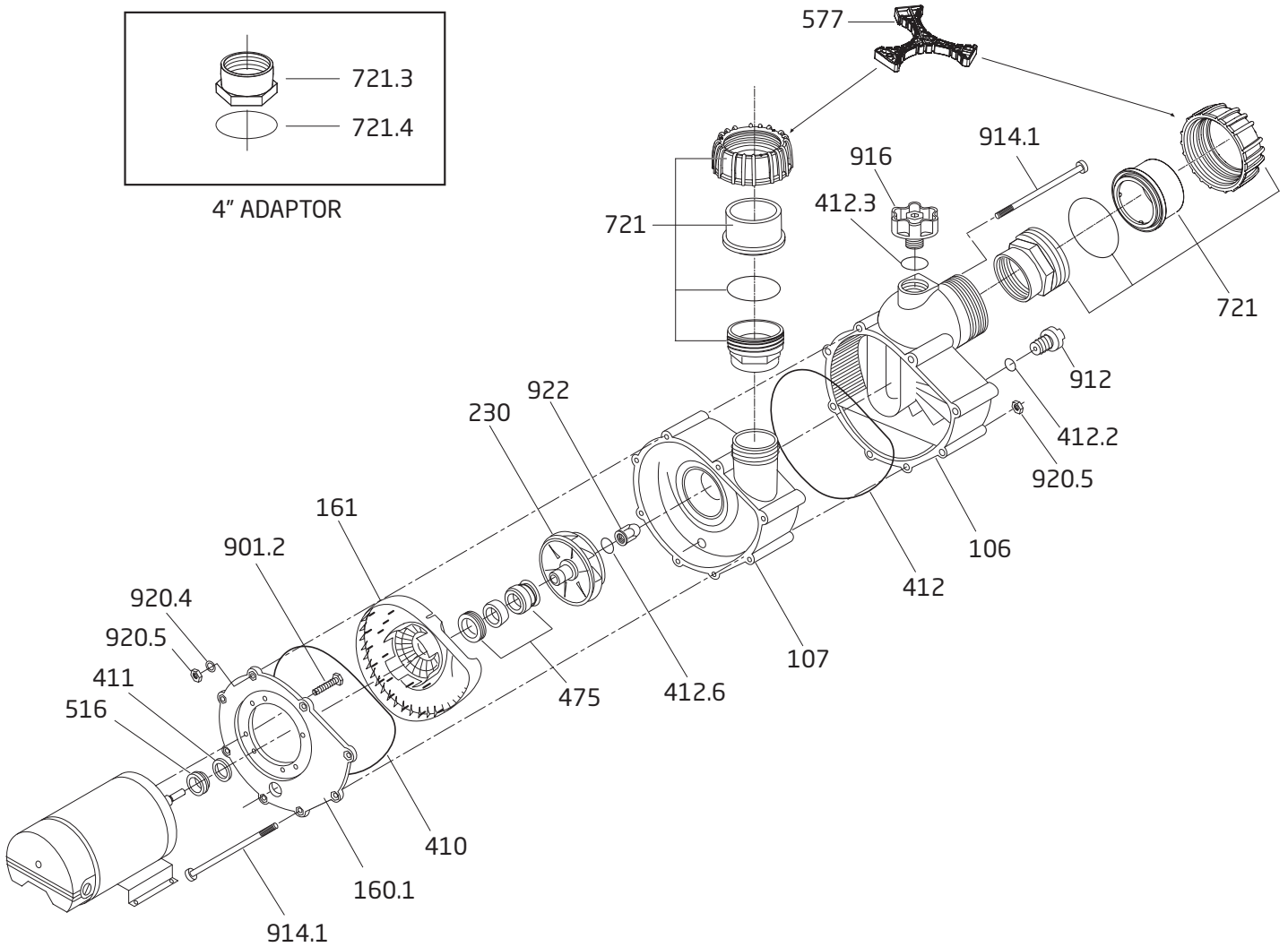


# MODEL 21-80 GS

Swimming Pool Pump



4" ADAPTOR



# MODEL 21-80 GS



## Swimming Pool Pump

Order #	Drawing Number	Qty Required	Description	List Price
2923592200	922	1	NUT - IMPELLER - PLASTIC W/ BRASS INSERT M12	\$ 15.50
5879340600	920.5	8	NUT - CASING BOLT M6 SS	0.80
2991000012	920.4	2	WASHER - CASING BOLT (#12) TOP 2 BOLTS ONLY SS	0.40
2922091600	916	1	FILLER PLUG (3/4")	10.90
2923241231	412.3	1	O-RING - FILLER PLUG 24 x 3.5mm	0.80
2923541220	412.2	1	O-RING - CASING DRAIN PLUG 12 x 2.5mm	0.60
2923591200	912	1	CASING DRAIN PLUG (1/4") HEX HEAD	5.50
2923291000	914.1	8	BOLT - CASING, PHILLIPS M6 x 170mm SS	16.50
2923190120	901.2	4	BOLT - MOTOR, HEX M8 x 16mm	1.70
2923151601	516	1	V-RING 18mm	9.10
2920343310	475	1	MECHANICAL SEAL (20mm) COMPLETE	53.40
2923541229	412.6	1	O-RING - SHAFT 16.9 x 2.75mm VITON	4.80
2923241200	412	1	O-RING - CASING 210 x 4mm	6.40
2923141240	411	1	SHAFT WASHER 14/22 IT 400	1.00
2923141010	410	1	GASKET - SEAL HOUSING	31.60
2923223013	230	1	IMPELLER 3.0 HP S.F. 1.15 106-122 / 20mm	80.80
2923223014	230.1	1	IMPELLER 4.0 HP S.F. 1.25 113-122 / 20mm	80.80
2923223035	230.2	1	IMPELLER 6.0 HP S.F. 1.0 120-122 / 20mm	80.80
2923116100	161	1	SEAL HOUSING	93.80
2923116010	160.1	1	ALUMINUM FLANGE	163.50
2923210722	107	1	DISCHARGE HOUSING	322.70
2923210620	106	1	SUCTION HOUSING	311.60
2500200900	721	2	4" UNION PKG - (INCLUDES ADAPTOR, O-RING 123 x 6mm, UNION END, NUT)	115.00
2902041252	NOT SHOWN	2	O-RING - UNION 123 x 6mm	3.50
2902072116	NOT SHOWN	2	UNION END 114mm/4"	18.40
2902072112	NOT SHOWN	2	NUT - UNION	46.60
2923172101	NOT SHOWN	2	ADAPTOR / UNION	49.60
2923141210	NOT SHOWN	2	O-RING - ADAPTOR / UNION 70 x 4.5mm	2.40

### Parts Unique To The Model 21-80/ GS Shipped Prior To March, 2000

2923800050	230, 922, 412.6	1	IMPELLER UPGRADE - IMPELLER (3.0 HP) w / NUT & O-RING	101.20
2923800020	230.1, 922, 412.6	1	IMPELLER UPGRADE - IMPELLER (4.0 HP) w / NUT & O-RING	101.20
2923800060	230.2, 922, 412.6	1	IMPELLER UPGRADE - IMPELLER (6.0 HP) w / NUT & O-RING	101.20
2923541220	412.6	1	O-RING - SHAFT 12 x 2.5mm	0.60
2923592300	922	1	NUT - IMPELLER M12 SS (OLD STYLE)	9.40

### Parts Unique To The Model 21-80/ GS Shipped Prior To January 29, 2008

2500223433	721.3	2	ADAPTOR - CASING (2-3/4" x 3" NPT / 4") - THREADED	82.60
2923141210	721.4	2	O-RING - ADAPTOR 70 x 4.5 mm	2.40

### Optional Parts

2902099800	577	1	UNION WRENCH	48.90
------------	-----	---	--------------	-------

### Motor Units For The Model 21-80

2088330005M	1	MOTOR UNIT COMPLETE (21-80/33) 4HP, SINGLE PHASE	1,575.00
2088330007M	1	MOTOR UNIT COMPLETE (21-80/33) 4HP, THREE PHASE	1,624.00
2088340005M	1	MOTOR UNIT COMPLETE (21-80/34) 6HP, SINGLE PHASE	1,813.00
2088340007M	1	MOTOR UNIT COMPLETE (21-80/34) 6HP, THREE PHASE	1,597.00

### Go Kits For The Model 21-80 GS

SPK-2180-GOKIT	1	KIT INCLUDES THE FOLLOWING PARTS:	114.20
----------------	---	-----------------------------------	--------



2923241231	O-RING FILLER PLUG 24 x3.5mm
2923541220	O-RING CASING DRAIN PLUG 12 x 2.5mm
2923151601	V-RING 18mm
2920343310	MECHANICAL SEAL (20mm) CPL
2923541229	O-RING SHAFT 16.9 x 2.75mm
2923241200	O-RING CASING 210 x 4mm
2923141010	SEAL HOUSING GASKET
2902041252	O-RING UNION 123 x 6mm
2923141210	O-RING UNION ADAPTER 70 x 4.5mm

8125 Bayberry Road, Jacksonville, Florida 32256 USA | Phone: (904) 739-2626 | Fax: (904) 737-5261

Website: [www.speck-pumps.com](http://www.speck-pumps.com)

Rev. 11/2017

# REPLACEMENT MOTORS



## REPLACEMENT MOTORS FOR SPECK PUMP MODELS - 21-80 BS, 21-80 G, 21-80 GS

Order #	MFR #	Model	HP	S.F.	Volts	Shaft	List Price
<b>SINGLE SPEED, E-Plus®/extreme-E™, 56 FRAME, C-FACE, PSC MOTOR</b>							
0817370201	B116	21-80/33	4.0	1.25	208-230	THR. M12	\$ 1,313.50
K63AVDGN5174	ASB116	21-80/33	4.0	1.25	208-230	THR. M12	1,313.50
0818430000	184300	21-80/34	6.0	1.0	208-230	THR. M12	1,535.40
<b>THREE PHASE, E-Plus®/extreme-E™, 56 FRAME, C-FACE, PSC MOTOR</b>							
0818102500	181025	21-80/33	4.0	1.25	208-230/460	THR. M12	1,365.40
0818616400	186164	21-80/34	6.0	1.0	208-230/460	THR. M12	1,335.80