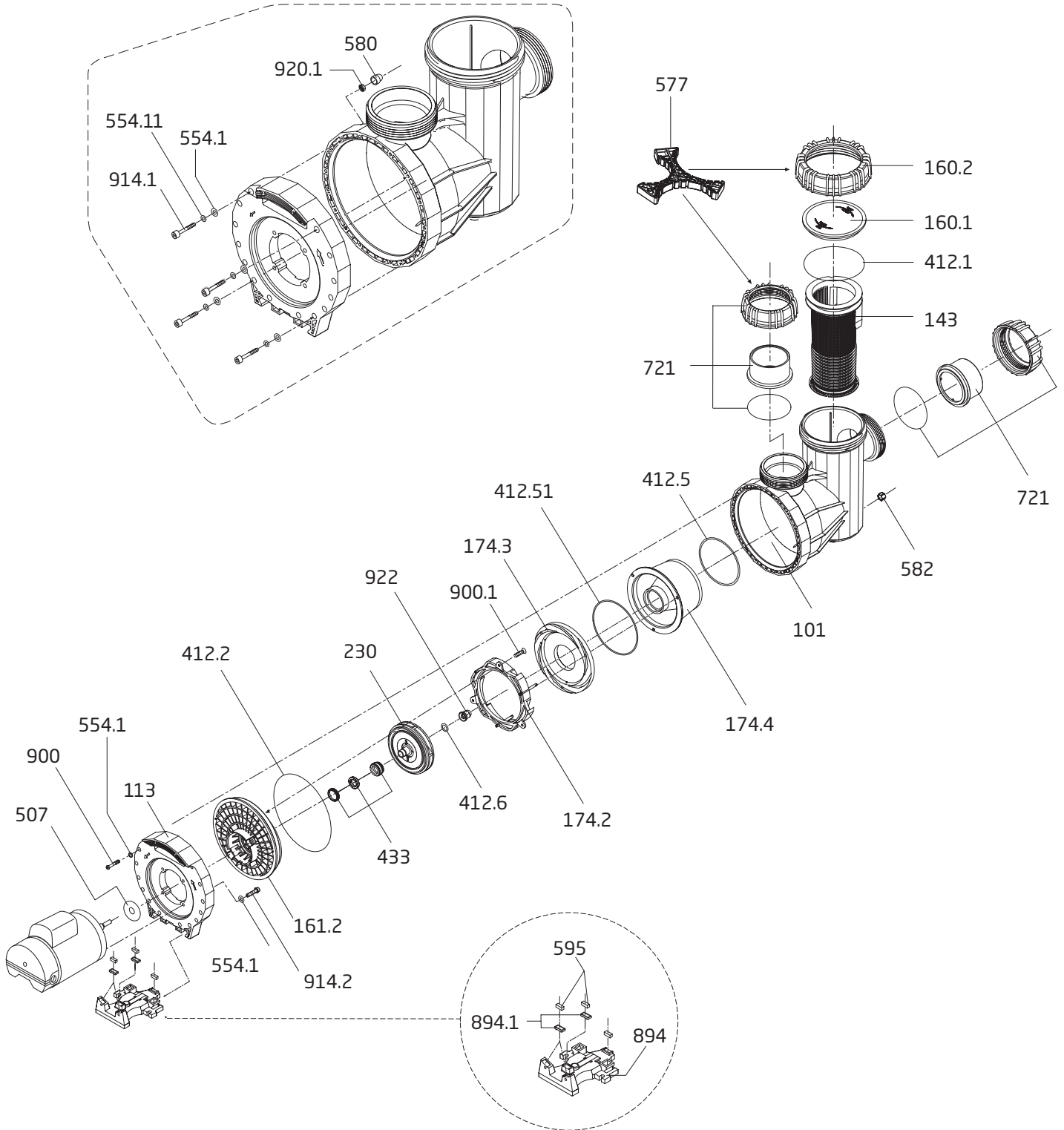


MODEL 95

Swimming Pool Pump

Model 95-V, 95-VI & 95-VIII



MODEL 95



Swimming Pool Pump

Model 95-V, 95-VI & 95-VIII

Order #	Drawing Number	Qty Required	Description	List Price
2902016020	160.2	1	LOCK RING - LID	\$ 43.30
2902016010	160.1	1	LID - CLEAR	41.60
2902041210	412.1	1	O-RING - LID 175 x 6.5mm	40.90
2902099800	577	1	SPANNER - LID, UNIONS	50.90
2902014300	143	1	BASKET - ONE PIECE	26.40
2902072154	721	2	UNION HALF PACKAGE - COMPLETE	70.20
2901158200	582	1	DRAIN CAP 3/8" WITH GASKET - CASING	2.80
2902010158	101	1	CASING	308.90
5879120665	914.1	4	BOLT - CASING ALLEN HEAD M6 x 65mm	7.50
5871250600	554.11	4	WASHER - CASING BOLT M6	0.70
2921192015	920.1	4	NUT - M6 SERRATED - CASING BOLT	1.50
2902058000	580	4	PROTECTIVE CAP - CASING BOLT	2.60
2902041252A	412.5	1	O-RING - DIFFUSER 123 x 5mm	2.90
2902017425	174.2	1	DIFFUSER	14.10
2902017421	174.4	1	CONFUSOR FOR DIFFUSER	52.00
2902017424	174.3	1	COVER DISK - DIFFUSER	14.40
2902041251	412.51	1	O-RING - CONFUSOR 145 x 2.5mm	14.10
2902021129	230	1	IMPELLER (-V) 2.4 THP (2.0 HP S.F. 1.2) 112/9mm	62.10
2902011411	230	1	IMPELLER (-VI) 3.45 THP (3.0 HP S.F. 1.15) 114/11.75mm	62.10
2902012112	230	1	IMPELLER (-VIII) 5.0 THP (4.0 HP S.F. 1.25) 123/12.5mm	62.10
2923541229	412.6	1	O-RING - SHAFT 16.9 x 2.75mm	5.00
2902041220	412.2	1	O-RING - CASING 265 x 6mm	46.00
2923592200	922	1	NUT - IMPELLER - PLASTIC W/ BRASS INSERT M12	16.20
2920343310	433	1	MECHANICAL SEAL (20mm) COMPLETE	55.60
2902016121	161.2	1	SEAL HOUSING 150mm	60.20
5879120835	914.2	4	BOLT - MOTOR ALLEN HEAD M8 x 35mm	3.90
5871250800	554.1	20	WASHER - MOTOR BOLT - CASING SCREW 8.4mm	0.70
2902011300	113	1	FLANGE	70.10
5879825522	900.1	3	SCREW - DIFFUSER 5.5 x 22mm	2.50
2921690002	900	12	SCREW - CASING - ALLEN HEAD M7 x 48mm	2.90
2902089400	894	1	BASE - MOTOR	40.20
2901489420	NOT SHOWN	1	MOTOR SUPPORT - MOTOR BASE	4.20
2902090020	NOT SHOWN	2	SCREW - BASE 4 x 16mm	1.00
2920359501	595	2	RUBBER BUFFER 10 x 10 x 27mm	4.00
2920889420	595.1	1	GASKET - MOTOR SUPPORT 1.4" x 7/16" x 1"	0.80
2920889410	894.1	10	LEGO	0.60
2923151601	NOT SHOWN	1	V-RING 18mm	9.50

Go Kits For The Model 95

SPK-95-GOKIT	1	KIT INCLUDES THE FOLLOWING PARTS:	158.40
--------------	---	-----------------------------------	--------



- 2902041210 - O-RING LID 175 x 6.5mm
- 2920141252A - O-RING DIFFUSER 123 x 5mm
- 2920343310 - MECHANICAL SEAL (20mm) CPL
- 2902041220 - O-RING CASING 265 x 6mm
- 2902041252 - O-RING UNION 123 x 6mm
- 2923541229 - O-RING SHAFT 16.9 x 2.75mm

REPLACEMENT MOTORS

Order #	MFR #	Model	THP	Full Rate HP	S.F.	Volts	Motor/Frame	List Price
SINGLE SPEED								
K63FLD5114	K63FLD-5114	-VIII	5.0	4.0	1.25	208-230	ODP 56	\$ 919.30
TWO SPEED								
B63SVABA1022	B63SVABA-1022	-VIII	5.0	4.0	1.25	230	ODP 56	986.70
THREE PHASE								
080000DS98	DS98	-VIII	5.0	4.0	1.25	208-230/460	ODP 56	1,006.80

8125 Bayberry Road, Jacksonville, Florida 32256 USA | Phone: (904) 739-2626 | Fax: (904) 737-5261

Website: www.speck-pumps.com

Rev. 01/2019