

BADUJET super-sport //

SwimJet System

The BADUJET super-sport II gives you the power and control you want from a swimjet system. Everything is right at your fingertips. This full featured swimjet offers suction and discharge in a unique, patented, one-piece housing.

Features

- Rectangular anti-entrapment cover (20" x 17") provides undetectable suction.
- Flush mounted, plastic housing with recessed jet nozzles, all controls are conveniently located on the face of the jet housing.
- Water volume control knob adjusts force of water leaving jet nozzles.
- Air regulator controls amount of air bubbles in water flow.
- LED push button turns low voltage light ON/OFF.
- SPECK Controller with GFCI and built-in WiFi.
- Control from outside the water with our intuitive BADUConnect App via WiFi.
- Utilizes the DOE Compliant SPECK Model 21-80 5.0 THP SwimJet Pump.
- Requires a single phase, 40 amp service; does not require a motor starter.
- The system comes with a 5ft. pulsating massage hose that can be attached to jet nozzle.
- System includes nozzle adjustment tools to help set the jet nozzles in position for optimum performance.
- Optional winter cover kit.

Installation Specifications

The BADUJET is normally incorporated into the design, but it can be added to any pool at a later date. The BADUJET has no protruding parts ensuring pool users' safety. All BADUJET systems include LED push button with 50' cable, SPECK controller, and our SPECK Model 21-80 5 THP SwimJet Pump.

- The BADUJET requires a clear unobstructed area within the swimming pool that is 8 ft wide x 15 ft long x 3 ft deep to work effectively.
- The BADUJET should be installed within 30 ft. of the pump with 4" pipe and minimal fittings for optimum performance. If the distance to the pump is greater than 30 ft., then 6" pipe should be used.

All BADUJET systems are provided with installation instructions for various pool construction types: new and existing gunite or concrete pools, pools with liners, steel wall pools, and fiberglass pools.

Read all instructions before installing.

Consult your physician before attempting any strenuous exercise. This product may not be challenging or satisfying for all levels of exercise.

SPECK X



BADUJET super-sport II

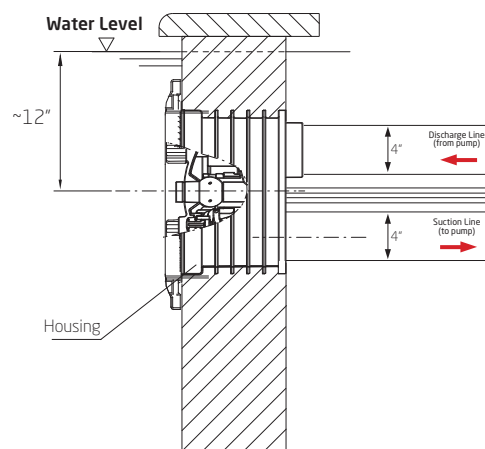
Trademarks and Certifications



Complies with UL 1563
CSA C22.2 No. 218.1-M89
Swimming Pool Equipment
Listing #E212148



VGBA 2017

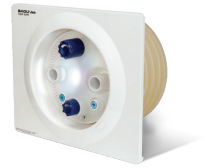


Side View

NOTE: Patented combined suction and discharge fitting does not require main drains.

Part Numbers

Single Phase System with GFCI



Order #	Description
---------	-------------

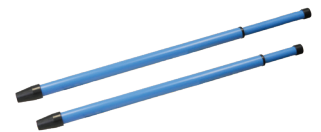
JS414-2400M-1Sw	BADUJET super-sport SwimJet System (400 GPM) - One Dual Nozzle Jet Housing, LED Light, Massage Hose, 5.0 THP Pump Model 21-80/33GS and Control Box with WIFI
-----------------	---

(Please call Speck Customer Service at (800) 223-8538 for Three Phase Systems)



Winter Cover

Nozzle Adjustment Tool



Accessories

Order #	Description
---------	-------------

2302005002	Round Cover Kit
2326000039K	Jet Nozzle Upgrade Kit <i>(Adds 10% more flow to systems sold between 1/2015-6/2016)</i>
2300003310	Massage Hose with Pulsator 15' & Hand Grip
2300022010	Cap with Hand Grip to Close one Nozzle
2326000010K	Winter Cover Kit
2336002899B	LED Push Button with 100 ft. Cable - On/Off
2326000036	Multi-color LED light
2326000049	Blue LED light
2308799007	Nozzle Adjustment Tools
2300011200	BADU Swim Mirror - 24" x 32" polished stainless steel with a PVC backing