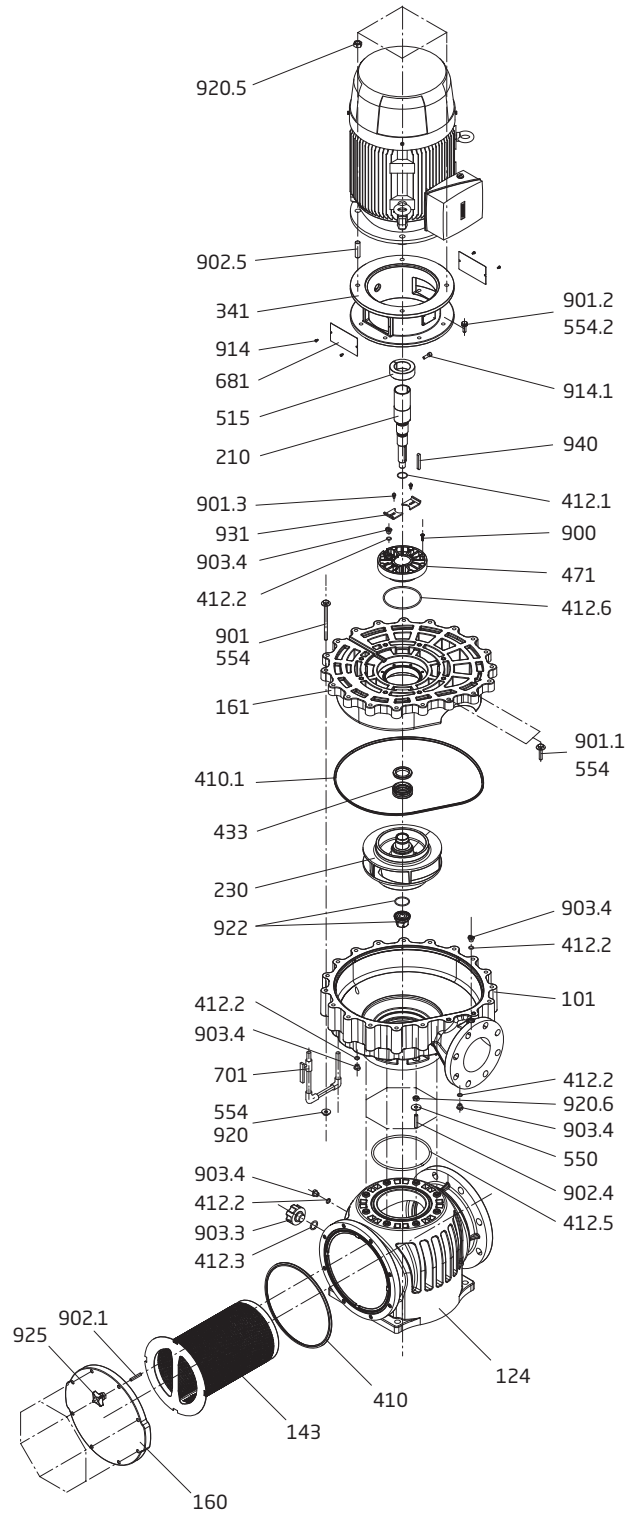


BADU® Block Multi Series (Model 125/250) **SPECK X**

All Polyurethane Pump



Order#	Drawing #	Qty Required	Description
7201310106	101	1	Casing CPL
1913391269	124	1	Plastic Strainer Tank CPL
1913421259A	Not Shown	1	Cast Iron Strainer Tank CPL w/ Ceramic Coating
1900214301	143	1	Strainer Basket - Stainless Steel
7201214300	143	1	Strainer Basket - Plastic
1900216602	160	1	Strainer Lid
7201316101	161	1	Seal Housing
7201321040	210	1	Pump Shaft CPL (20 HP)
7201321041	210	1	Pump Shaft CPL (25, 30 HP)
7201323000/235	230	1	Impeller (20.0 HP) 235mm
7201323000/245	230	1	Impeller (25.0 HP) 245mm
7201323000/255	230	1	Impeller (30.0 HP) 255mm
7201434141	341	1	Motor Lantern CPL
1913214109	410	1	Gasket - Strainer Lid, NBR
7201341000	410.1	1	Gasket - 440 x 6mm - Casing, NBR
7201341240	412.1	1	O-ring - 30 x 2mm - Pump Shaft, NBR
7201340000	412.4	1	Gasket - 47 x 36 x 3mm, Impeller Nut, NBR
2902041210	412.5	1	O-ring - 175 x 6.5mm - Strainer, NBR
7201341260	412.6	1	O-ring - 120 x 4.5mm - Seal Lid, NBR
7201343303	433	1	Mechanical Seal (45mm) CPL - Carbon/SiC+EPDM
7201343304	433	1	Mechanical Seal (45mm) CPL - SiC/SiC+EPDM
7201347102	471	1	Seal Housing Insert CPL w/ #412.6
7201451500	515	1	Shaft Collar
5879021100	550	8	Washer - 10.5 x 30mm, SS
5879021100	554	36	Washer - 10.5 x 30mm, SS
5871251000	554.2	8	Washer - 10.5mm, SS
7201268103	681	2	Plate With Speck Logo
7201270007	701	1	Air Bleed/Circulation Line Assembly
5879006023	900	8	Tapping Screw - 6 x 22mm
5879311150	901	17	Screw - M10 x 150mm, Hex SS
5879311050	901.1	2	Screw - M10 x 50mm, Hex SS
5879331030	901.2	8	Screw - M10 x 30mm, Hex SS
5879330610	901.3	2	Screw - M6 x 10mm, Hex SS
5879390835	902.10	8	Stud - M8 x 35, SS
5879391035	902.4	8	Stud - M10 x 35, SS
5879391640	902.5	4	Stud - M16 x 40, SS
2922091600A	903.3	1	Red Drain Plug (3/4") w/ O-ring
2923591201A	903.4	3	Black Drain Plug (1/4") w/ O-ring
5879120406	914	4	Screw - M4 x 6 Hex SS
5819120826	914.1	1	Screw - M8 x 25mm
5879341000	920	17	Nut - M10 SS
5879341600	920.5	4	Nut - M16 SS
5879341000	920.6	8	Nut - M10 SS
7201392202	922	1	Impeller Nut & Gasket
2921891500	925	8	Handle M8 - Black
7201293100	931	2	Locking Tab
5878850879	940	1	Shaft Key 8 x 7 x 63