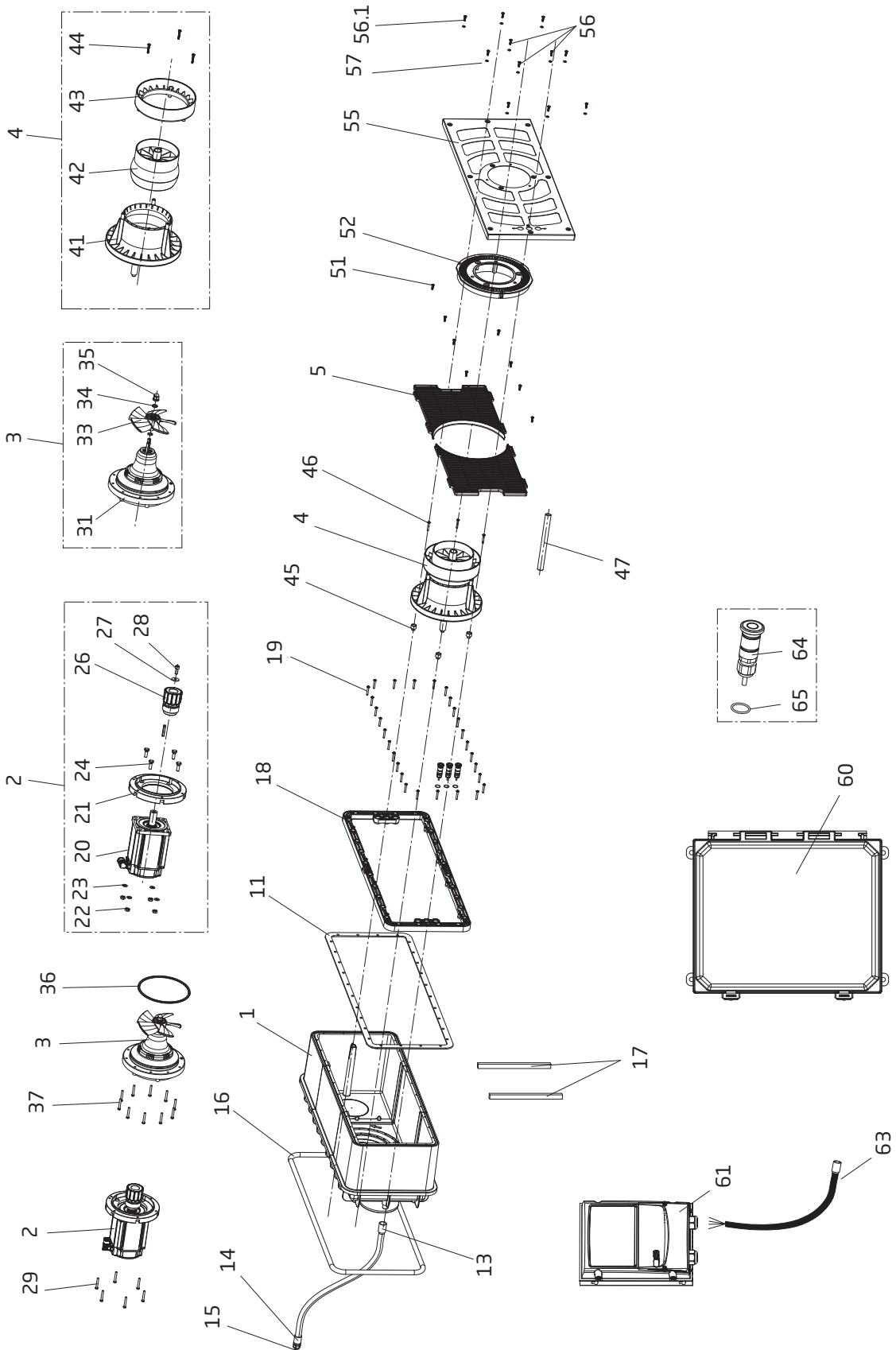


BADUJET Turbo

SwimJet System



Order#	Drawing #	Qty Required	Description
2328000100A	1	1	Housing CPL w/ Housing Tapping Screws, Washers, Support slats, Foam tape, & Epoxy
2328150001	2	1	Motor Unit
2325023100	3	1	Propeller Unit
2325023200	3, 36 & 37	1	Propeller Unit CPL
2325010200	4	1	Nozzle Unit CPL
2328009301	5	2	Suction Grate
2328002700	11	1	Gasket, Housing
5862432531	13	1	Connector Conduit M25 x 3/4"
2326000033	14	1	3/4" Fem. Adapter, Strain Relief
2326000031	15	1	Strain Relief (3 x 7mm, 3/4" NPT)
2326000020	16	1	Round Sealing Cord 3.8mm (for concrete pools)
2325000405	17	2	Wood Support, 20 x 220 x 325mm (for concrete pools)
2328002801	18	2	Clamping Ring
5879006041	19	28	Tapping Screws - 6 x 40mm, A4
5266342	20	1	Motor - 2HP
2325059800	21	1	Intermediate Flange
5879341000	22	4	Nut - Motor M10, A4
5871251000	23	4	Washer - Motor 10.5mm, A2
5879331036	24	4	Hex Bolt - Motor, M10 x 35mm, A4
2325084705	26	1	Inner Rotor CPL (w/ Magnets)
5879021100	27	1	Washer - Motor, 10.5 x 30mm, A2
5879121025	28	1	Bolt - Motor, M10 x 25mm, A2
2991000091	29	6	Screw - Motor - Hex/Slot M7 x 48mm, SS
2325016101	31	1	Seal Housing CPL w/ Magnet
2325023000	33	1	Propeller
2923541222	34	1	O-ring - Propeller 16.9 x 2.75mm Viton
2923592202	35	1	Impeller Nut, M12
2325006200	36	1	O-ring - 212 x 7mm, NBR
2991000091	37	10	Screw - Motor - Hex/Slot M7 x 48mm, SS

Order#	Drawing #	Qty Required	Description
2325010210	41	1	Inlet Nozzle
2325005400	42	1	Ball Nozzle CPL, 180mm
2325005900	43	1	Nozzle Flange
5879006041	44	3	Tapping Screw - Nozzle - 6 x 40mm, A4
2325010240	45	1	Adaptors Set - Nozzle
5879006041	46	3	Tapping Screw - 6 x 40mm, A4
2325005500	47	1	Adjustment Tool
2325009321	52	1	Center Cover
2328009315A	55	1	Plastic Cover
5879006024	56	3	Tapping Screw - Front Cover - 6 x 22mm, A5
2991000146	51	16	Screw - M6 x 20mm, For Suction Grate and Front Cover
5871250602	57	11	Washer - M6, Clear (For Stainless Steel Cover ONLY)
2920280743	60	1	Control Box - BJC TURBO
ODE31200701F1A	61	1	VFD
2325000013A	63	1	VFD Motor Cable, 10m (shipped prior to 12/2023)
2336002899T	64 & 65	3	LED Push Button CPL w/ Cable, O-rings & ferrules

Optional Parts

Order#	Drawing #	Qty Required	Description
2328009311A	55	1	Stainless Steel Cover (Bubble Design)
2328009310A	55	1	Stainless Steel Cover (Standard Design)
7300050000	Not Shown	1	Bonding Adaptor (for Stainless Steel Cover)
7300050001	Not Shown	1	Bonding Wire Assembly (for Stainless Steel Cover)
2325000014A	63	1	VFD Motor Cable, 80 ft. (shipped after 12/2023)
2325000015A	63	1	VFD Motor Cable, 150 ft.
2336002869A	64	3	100 ft. LED Push Button CPL w/ Cable, O-rings & ferrules
2601001902	Not Shown	4	Aqua Bond Epoxy (for concrete install)
2601001906	Not Shown	1	Foam Tape (for concrete install)