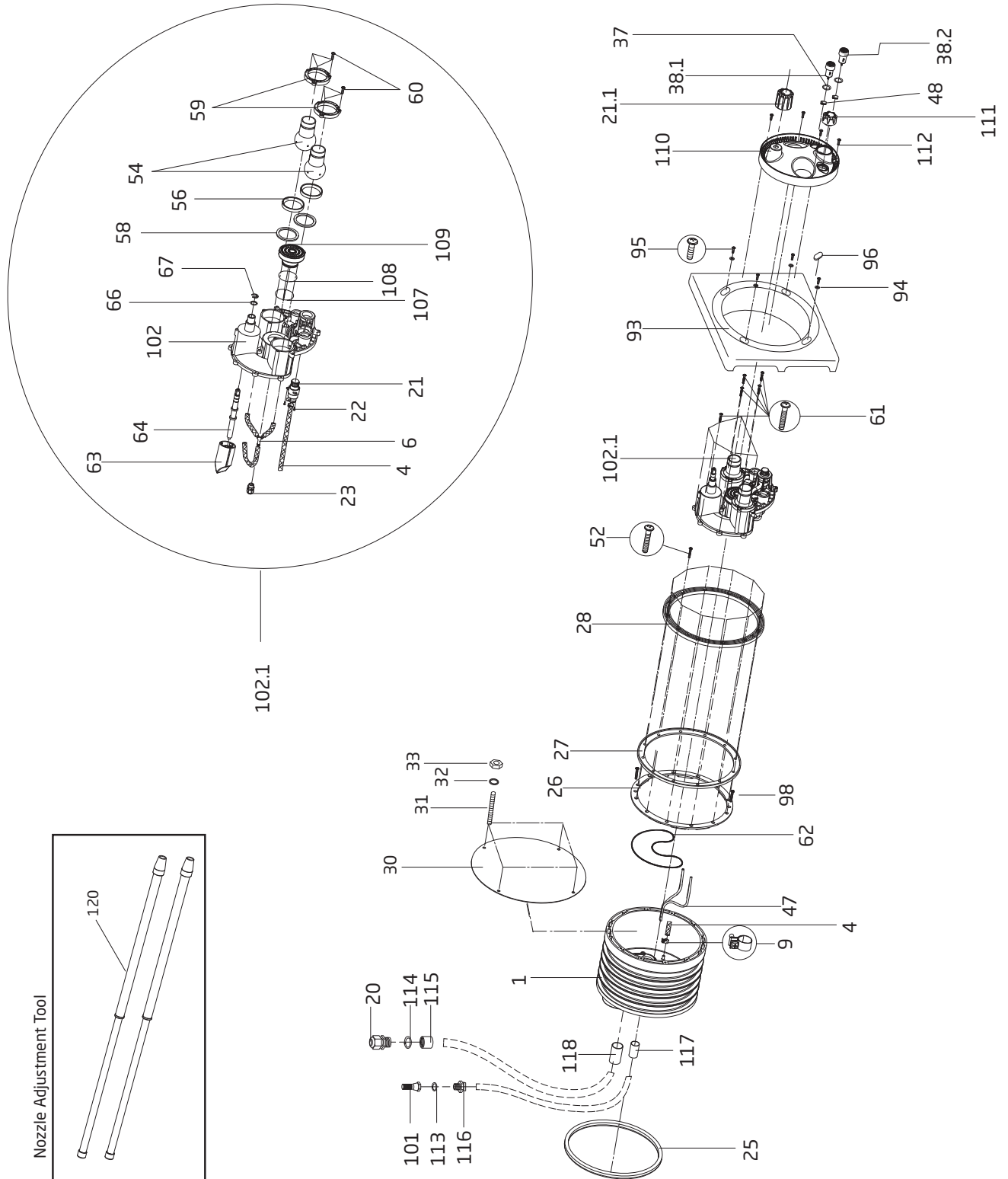


# Badu<sup>®</sup> Jet super-sport //

SwimJet System



# Badu<sup>®</sup>Jet super-sport //

SwimJet System



| Order #     | Drawing Number | Qty Required | Description                                       | List Price |
|-------------|----------------|--------------|---|------------|
| 2326000002A | 1              | 1            | JET HOUSING                                       | \$ 554.80  |
| 2301001007  | 4              | 3 FT         | HOSE - AIR REGULATOR 8 x 3mm (PRICE PER FOOT)     | 8.60       |
| 2326000408  | 6              | 1            | HOSE (3X) WITH Y- HOSE BARB                       | 9.10       |
| 2301001008  | 9              | 2            | CLAMP - HOSE, AIR REGULATOR 14/9 SS A4            | 5.90       |
| 2326000031  | 20             | 1            | STRAIN RELIEF - LIGHT CABLE, 3/4" NPT             | 23.10      |
| 2321000409  | 21             | 1            | AIR REGULATOR COMPLETE                            | 50.50      |
| 2326000006  | 21.1           | 1            | VOLUME CONTROL KNOB                               | 24.20      |
| 5879812995  | 22             | 3            | SCREW - AIR REGULATOR, 2.9 x 9.5                  | 0.70       |
| 5882501619  | 23             | 1            | STRAIN RELIEF - LIGHT CABLE, M16 x 1.5            | 19.30      |
| 2326000020  | 25             | 1            | ROUND SEALING CORD                                | 7.10       |
| 2301000026  | 26             | 1            | GASKET WITH KNOBS - JET HOUSING                   | 111.90     |
| 2326000021  | 27             | 1            | GASKET - CLAMPING RING                            | 102.30     |
| 2301000028  | 28             | 1            | RING - CLAMPING                                   | 122.10     |
| 2301000030K | 30-33          | 1            | GUNITE COVER KIT                                  | 87.50      |
| 2326000014  | 37             | 2            | O-RING - TOUCH BUTTON - 24 x 3mm                  | 0.60       |
| 2336002899A | 38.1 & 47      | 1            | LED TOUCH BUTTON W/ CABLE COMPLETE - PUMP         | 163.80     |
| 2336002898A | 38.2 & 47      | 1            | LED TOUCH BUTTON W/ CABLE COMPLETE - LIGHT        | 163.80     |
| 5879860830  | 52             | 12           | SCREW - CLAMPING RING, POZIDRIV/PAN M8 x 30mm A4  | 4.40       |
| 2302002954  | 54             | 2            | NOZZLE - 40mm                                     | 103.90     |
| 2302002056  | 56             | 2            | SEAT - NOZZLE                                     | 8.10       |
| 2302002057  | 58             | 2            | SPACER - NOZZLE 6.2mm                             | 7.00       |
| 2319800817  | 59             | 2            | NOZZLE FLANGE                                     | 12.50      |
| 5879006023  | 60             | 6            | TAPPING SCREW - BALL NOZZLE FLANGE, 6 x 22mm A4   | 2.60       |
| 5879006023  | 61             | 10           | TAPPING SCREW - NOZZLE HOUSING, 6 x 22mm A4       | 2.60       |
| 2326000013  | 62             | 1            | O-RING - NOZZLE HOUSING 257 x 3mm                 | 7.60       |
| 2326000004  | 63             | 1            | VOLUME CONTROL CYLINDER                           | 24.00      |
| 2302002964  | 64             | 1            | VOLUME CONTROL SPINDLE (COMPLETE)                 | 43.40      |
| 2302002065  | 66             | 2            | WASHER - VOLUME CONTROL SPINDLE, 23 x 16.2 x1.5mm | 2.60       |
| 2302002067  | 67             | 1            | RETAINER - SHAFT, VOLUME CONTROL SPINDLE          | 2.10       |
| 2302005236  | 93             | 1            | COVER - RECTANGULAR                               | 109.00     |
| 5871250800  | 94             | 4            | WASHER - RECTANGULAR COVER 8.4mm A4               | 0.70       |
| 5879860820  | 95             | 4            | BOLT - RECTANGULAR COVER, PHILLIPS M8 x 20mm      | 3.40       |
| 5879850880  | 95.1           | 4            | BOLT - RECTANGULAR COVER, PHILLIPS M8 x 80mm      | 6.10       |
| 2302005237  | 96             | 4            | PLUG - RECTANGULAR COVER                          | 3.10       |
| 2991000140  | 98             | 2            | SCREWS - COUNTERSUNK PHILLIPS M8 x 30mm           | 3.60       |
| 5030000105  | 101            | 1            | VALVE - CHECK 1/2"                                | 42.80      |
| 2326000003  | 102            | 1            | HOUSING - NOZZLE                                  | 76.30      |
| 2326000401K | 102.1          | 1            | HOUSING - NOZZLE COMPLETE w/ LED LIGHT            | 364.90     |
| 3932541201  | 107            | 1            | O-RING - LIGHT 48 x 2mm                           | 1.60       |
| 2607101019  | 108            | 1            | O-RING - LIGHT 49 x 3.5mm                         | 1.00       |
| 2326000057  | 109            | 1            | LIGHT LED 12V AC - WHITE, 10M                     | 145.30     |
| 2326000035  | 110            | 1            | LIGHT COVER                                       | 52.90      |
| 2321000022  | 111            | 1            | AIR REGULATOR KNOB                                | 7.90       |
| 5879006023  | 112            | 4            | TAPPING SCREW - LIGHT COVER, 6 x 22mm A4          | 2.60       |
| 2920141230  | 113            | 1            | O-RING - CHECK VALVE, 19 X 3mm                    | 0.60       |
| 2326000032  | 114            | 1            | O-RING - STRAIN RELIEF                            | 1.80       |
| 2326000034  | 115            | 1            | ADAPTOR - STRAIN RELIEF, FEMALE, PVC 3/4"         | 1.80       |
| 2301001030  | 116            | 1            | ADAPTOR - CHECK VALVE, MALE, PVC 1/2"             | 0.90       |
| 5862432021  | 117            | 1            | CONNECTOR - AIR REGULATION LINE M20 x 1/2"        | 21.00      |
| 5862432531  | 118            | 1            | CONNECTOR - CONDUIT M25 x 3/4"                    | 22.30      |
| 2920280730  | NOT SHOWN      | 1            | CONTROL BOX BJC-7-GFCI-WIFI                       | 1,264.00   |
| 2920280733  | NOT SHOWN      | 1            | CONTROL BOX BJC-7-GFCI-WIFI+3AUX                  | 1,498.00   |

**\*\*SEE NEXT PAGE FOR ADDITIONAL PARTS**

# Badu<sup>®</sup>Jet super-sport //

SwimJet System



| Order #  | Drawing Number | Qty Required | Description                                       | List Price |
|--|----------------|--------------|---|------------|
| <b>Parts Below Are Unique To The BaduJet Super-Sport II Shipped Prior to November 2019</b> |                |              |   |            |
| 2326000014   | 37             | 2            | O-RING - PNEUMATIC BUTTON 24 x 3mm                | \$ 0.60    |
| 2321000401   | 38.1           | 1            | PNEUMATIC BUTTON COMPLETE - PUMP                  | 21.00      |
| 2321000404   | 38.2           | 1            | PNEUMATIC BUTTON COMPLETE - LIGHTS                | 21.00      |
| 2300202060   | 47             | 2            | AIR TUBING - LIGHT/PUMP 4 x 1.5mm (PRICE PER 10M) | 33.10      |
| 2302001046   | 48             | 2            | CLAMP - HOSE, PNEUMATIC BUTTON 6.8 - 8mm          | 8.60       |
| 2920280729   | NOT SHOWN      | 1            | CONTROL BOX BJC-7-GFCI+CP SSII                    | 1,264.00   |
| <b>Optional Parts</b>  |                |              |   |            |
| 2326000036   | 109.1          | 1            | LIGHT LED 12V AC - MULTICOLOR, 10M                | 186.10     |
| 2326000049   | 109.2          | 1            | LIGHT LED 12V AC - BLUE, 10M                      | 186.10     |
| 2326000010K  | NOT SHOWN      | 1            | WINTER COVER KIT                                  | 220.40     |
| 2300003010   | NOT SHOWN      | 1            | MASSAGE HOSE 5 FT. WITH PULSATOR & HAND GRIP      | 181.60     |
| 2300003310   | NOT SHOWN      | 1            | MASSAGE HOSE 15 FT. WITH PULSATOR & HAND GRIP     | 286.80     |
| 2300022010   | NOT SHOWN      | 1            | CAP - NOZZLE & HAND GRIP, CLOSE OFF               | 68.60      |
| 2308799007   | 120            | 1            | NOZZLE ADJUSTMENT TOOLS                           | 50.00      |