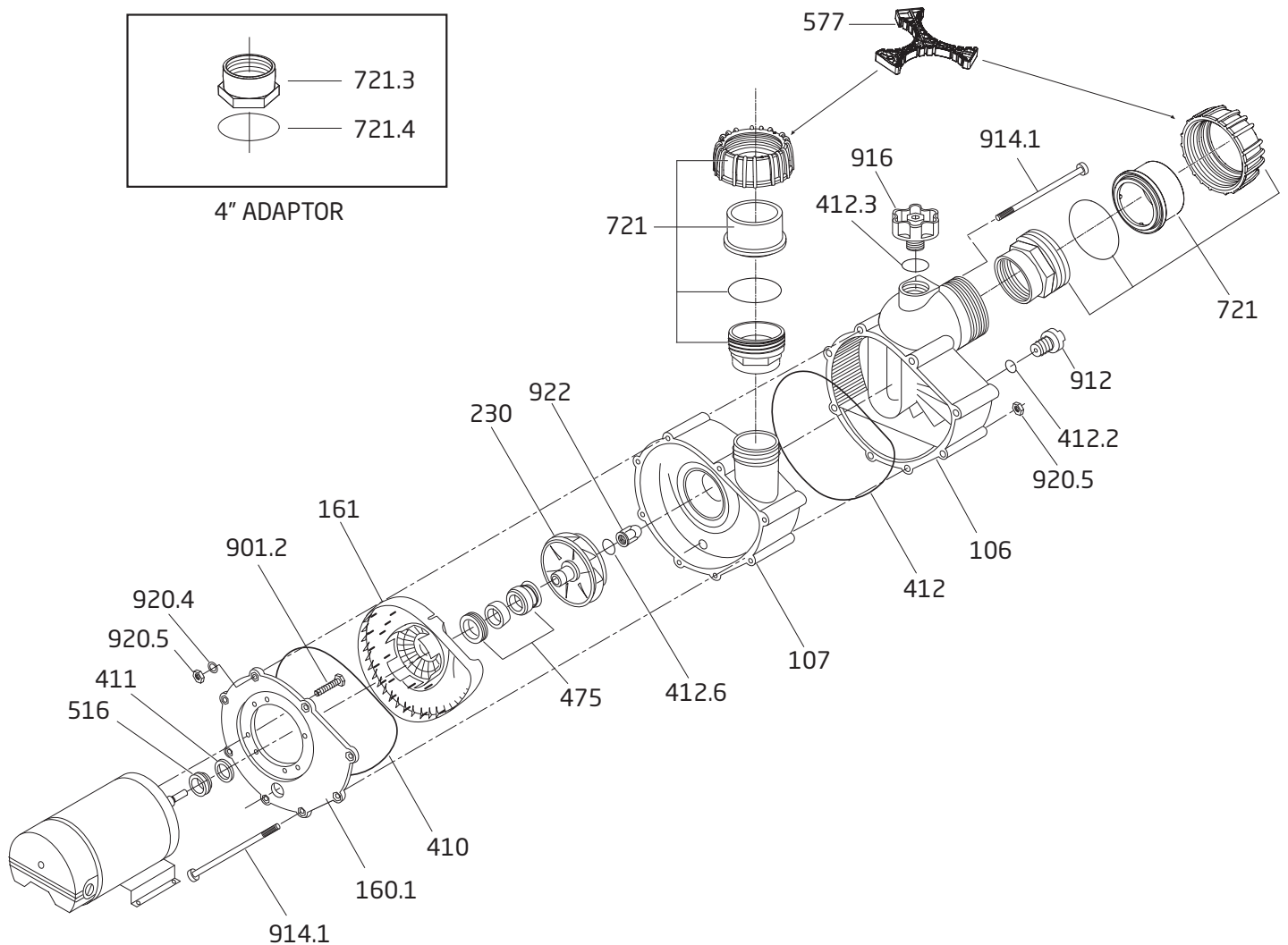


# MODEL 21-80 GS

Swimming Pool Pump



# MODEL 21-80 GS

Swimming Pool Pump



Order #	Drawing Number	Qty Required	Description	List Price
2923592200	922	1	NUT - IMPELLER - PLASTIC w/ BRASS INSERT M12	\$ 16.80
5879340600	920.5	8	NUT - CASING BOLT M6 SS	0.90
2991000012	920.4	2	WASHER - CASING BOLT (#12) TOP 2 BOLTS ONLY SS	0.50
2922091600	916	1	FILLER PLUG (3/4") - RED	11.80
2923241231	412.3	1	O-RING - FILLER PLUG 24 x 3.5mm	0.90
2923541220	412.2	1	O-RING - CASING DRAIN PLUG 12 x 2.5mm	0.70
2923591200	912	1	CASING DRAIN PLUG (1/4") HEX HEAD	6.00
2923291000	914.1	8	BOLT - CASING, PHILLIPS M6 x 170mm SS	17.90
2923190120	901.2	4	BOLT - MOTOR, HEX M8 x 16mm	1.90
2923151601	516	1	V-RING 18mm	9.90
2920343310	475	1	MECHANICAL SEAL (20mm) COMPLETE	57.70
2923541229	412.6	1	O-RING - SHAFT 16.9 x 2.75mm VITON	5.20
2923241200	412	1	O-RING - CASING 210 x 4mm	7.00
2923141240	411	1	SHAFT WASHER 14/22 IT 400	1.00
2923141010	410	1	GASKET - SEAL HOUSING	34.30
2923223013	230	1	IMPELLER 3.0 HP S.F. 1.15 106-122 / 20mm	87.30
2923223014	230	1	IMPELLER 4.0 HP S.F. 1.25 113-122 / 20mm	87.30
2923223035	230	1	IMPELLER 6.0 HP S.F. 1.0 120-122 / 20mm	87.30
2923116100	161	1	SEAL HOUSING	101.40
2923116010	160.1	1	ALUMINUM FLANGE	176.70
2923210722	107	1	DISCHARGE HOUSING	348.80
2923210620	106	1	SUCTION HOUSING	336.70
2500200900	721	2	4" UNION PKG - (INCLUDES ADAPTOR, O-RING 123 x 6mm, UNION END, NUT)	124.30
2902041252	NOT SHOWN	2	O-RING - UNION 123 x 6mm	3.80
2902072116	NOT SHOWN	2	UNION END 114mm/4"	19.90
2902072112	NOT SHOWN	2	NUT - UNION	50.40
2923172101	NOT SHOWN	2	ADAPTOR / UNION	53.60
2923141210	NOT SHOWN	2	O-RING - ADAPTOR / UNION 70 x 4.5mm	2.60

## Parts Unique To The Model 21-80/ GS Shipped Prior To March, 2000

2923800050	230, 922, 412.6	1	IMPELLER UPGRADE - IMPELLER (3.0 HP) w / NUT & O-RING	109.30
2923800020	230, 922, 412.6	1	IMPELLER UPGRADE - IMPELLER (4.0 HP) w / NUT & O-RING	109.30
2923800060	230, 922, 412.6	1	IMPELLER UPGRADE - IMPELLER (6.0 HP) w / NUT & O-RING	109.30
2923541220	412.6	1	O-RING - SHAFT 12 x 2.5mm	0.70
2923592300	922	1	NUT - IMPELLER M12 SS (OLD STYLE)	DISCONTINUED

## Parts Unique To The Model 21-80/ GS Shipped Prior To January 29, 2008

2500223433	721.3	2	ADAPTOR - CASING (2-3/4" x 3" NPT / 4") - THREADED	89.40
2923141210	721.4	2	O-RING - ADAPTOR 70 x 4.5 mm	2.60

## Optional Parts

2902099800	577	1	UNION WRENCH	52.90
------------	-----	---	--------------	-------

## Motor Units For The Model 21-80

2088330005M		1	MOTOR UNIT COMPLETE (21-80/33) 4HP, SINGLE PHASE	1,686.00
2088330007M		1	MOTOR UNIT COMPLETE (21-80/33) 4HP, THREE PHASE	1,738.00
2088340005M		1	MOTOR UNIT COMPLETE (21-80/34) 6HP, SINGLE PHASE	1,941.00
2088340007M		1	MOTOR UNIT COMPLETE (21-80/34) 6HP, THREE PHASE	1,709.00

**\*\*SEE NEXT PAGE FOR ADDITIONAL PARTS**

# MODEL 21-80 GS

Swimming Pool Pump



Order #	Drawing Number	Qty Required	Description	List Price
<b>Go Kits For The Model 21-80 GS</b>				
SPK-2180-GOKIT		1	KIT INCLUDES THE FOLLOWING PARTS:	\$ 123.00
			2923241231 - O-RING FILLER PLUG 24 x3.5mm	
			2923541220 - O-RING CASING DRAIN PLUG 12 x 2.5mm	
			2923151601 - V-RING 18mm	
			2920343310 - MECHANICAL SEAL (20mm) CPL	
			2923541229 - O-RING SHAFT 16.9 x 2.75mm	
			2923241200 - O-RING CASING 210 x 4mm	
			2923141010 - SEAL HOUSING GASKET	
			2902041252 - O-RING UNION 123 x 6mm	
			2923141210 - O-RING UNION ADAPTER 70 x 4.5mm	



## REPLACEMENT MOTORS FOR SPECK PUMP MODELS - 21-80 BS, 21-80 G, 21-80 GS

Order #	MFR #	Model	HP	S.F.	Volts	Shaft	List Price
<b>SINGLE SPEED, E-Plus®/extreme-E™, 56 FRAME, C-FACE, PSC MOTOR</b>							
0817370201	B116	21-80/33	4.0	1.25	208-230	THR. M12	\$ 1,419.40
K63AVDGN5174	ASB116	21-80/33	4.0	1.25	208-230	THR. M12	1,419.40
0818430000	184300	21-80/34	6.0	1.0	208-230	THR. M12	1,659.20
<b>THREE PHASE, E-Plus®/extreme-E™, 56 FRAME, C-FACE, PSC MOTOR</b>							
0818102500	181025	21-80/33	4.0	1.25	208-230/460	THR. M12	1,475.50
0818616400	186164	21-80/34	6.0	1.0	208-230/460	THR. M12	1,443.50