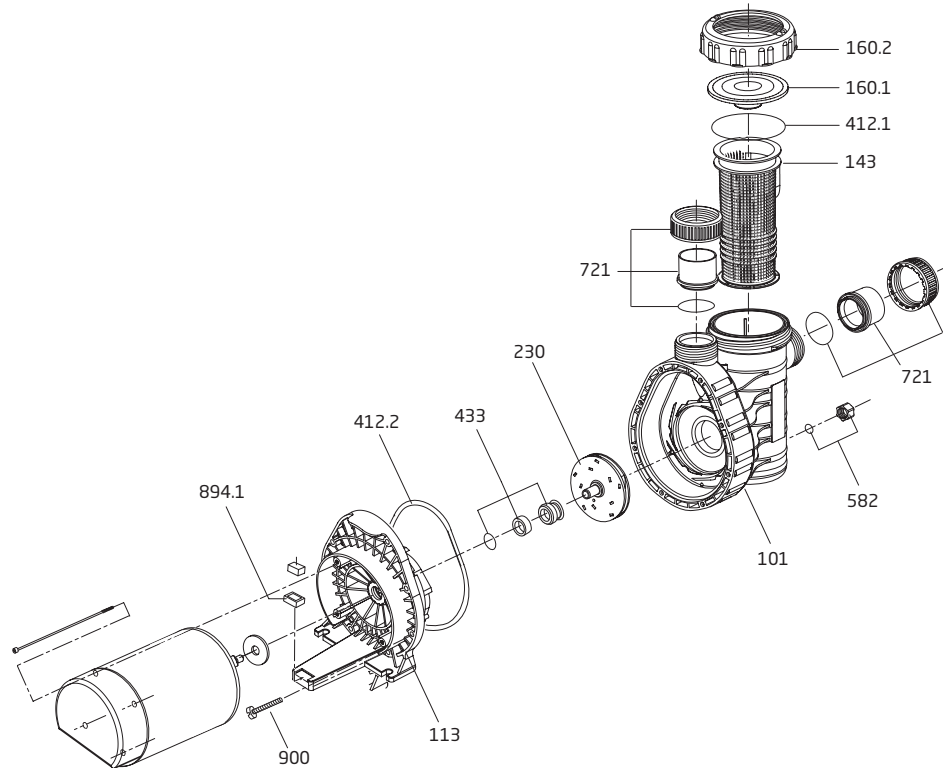


# Model A91 Series

Self-Priming Swimming Pool Pump



Models: A91(R), A91, A91-I, A91 -II & A91-II VSP



Order#	Drawing #	Qty Required	Description
2901316020	160.2	1	Lid - Lock Ring
2901316010	160.1	1	Lid - Clear
2901341220	412.1	1	O-ring - Lid 105 x 5mm
2901314300	143	1	Basket
2901310101	101	1	Casing
2901158200	582	1	Drain Cap 3/8" w/ Gasket
2921623131	230	1	Impeller (A91R) - 0.5 THP (0.75 HP SPL) 92-100 x 4.5mm
2921623895	230	1	Impeller - 0.5 THP 95 x 8mm
2921623898	230	1	Impeller (-I) - 0.75 THP 98 x 8mm
2921623098	230	1	Impeller (-II & -II VSP) - 1.0 THP (1.5 HP SPL) 98 x 10.5mm
2921606204	433	1	Mechanical Seal (5/8") - Carbon/Ceramic
2921641223	412.2	1	O-ring - Casing 165 x 6mm
2991000091	900	8	Screw - Casing M7 x 48mm
2920889410	894.1	1	Lego Spacer

Order#	Drawing #	Qty Required	Description
2901316101	113	1	Flange/Seal Housing
2500300916	721	1	Union Package CPL - Slip
2500300913	721	1	Union Package CPL - NPT
2500300909	721	2	Half Union Set - NPT
2500300910	721	2	Half Union Set - Slip

**Parts Below Are Unique to the Model A91 Shipped Prior to 07/2021**

2921623031	230	1	Impeller - 0.5 THP (0.75 HP SPL) 100 x 4.5mm
2921623132	230	1	Impeller (-I) - 0.75 THP (1.0 HP SPL) 98 x 6.5mm

**Go Kits For The A91**

SPK-A91-GOKIT	Not Shown	1	Seal GoKit*
---------------	-----------	---	-------------



\* Please Note: That the Seal Go Kits includes the following items: Mechanical Seal (5/8"), & O-rings.