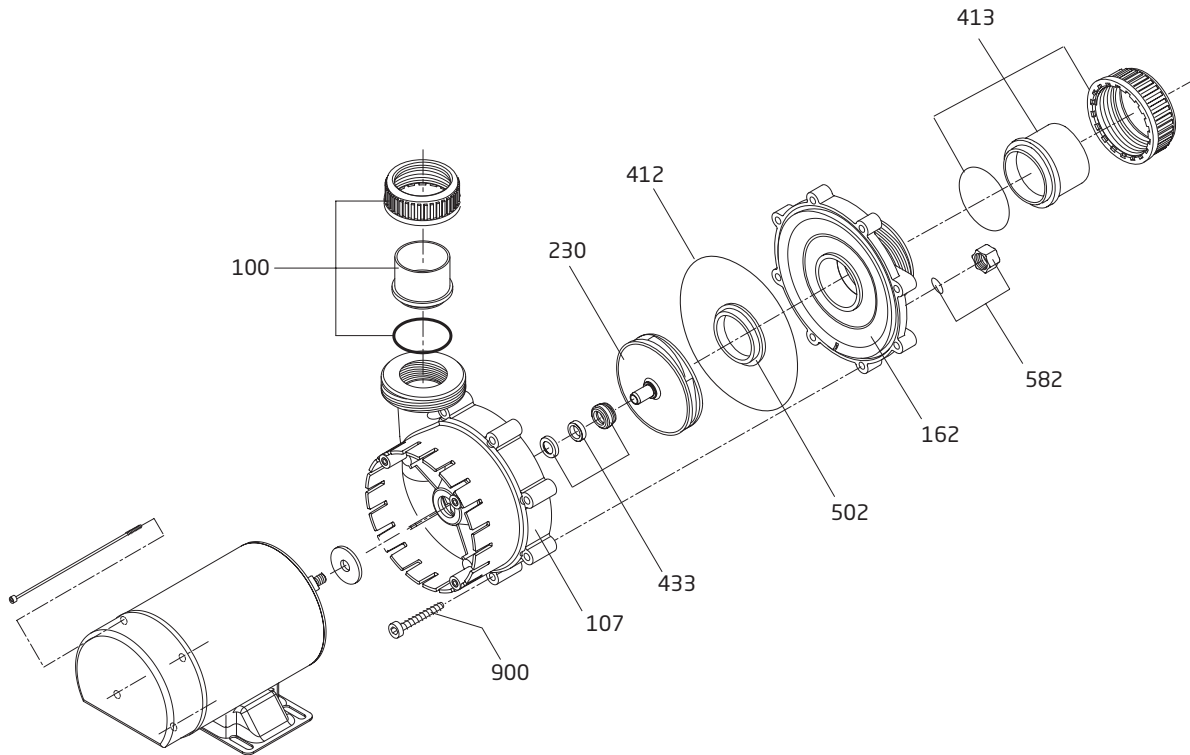


Model E75

Rigid Electric Spa Pump



Order#	Drawing #	Qty Required	Description
2901210700	107	1	Casing
2920750200	502	1	Floating Eye Seal (Wear Ring)
2991000091	900	8	Screw - M7 x 48.4mm (3/8") Hex A2 (x8)
2921606204	433	1	Mechanical Seal (5/8") - Carbon/Ceramic
2901141200	412	1	O-ring - Casing 144 x 4mm
2901158200	582	1	Drain Cap 3/8" w/ Gasket
2901216108	162	1	Casing Lid
2921923091	230	1	Impeller (-I) - 0.75 THP (1.0 HP SPL) 99 x 4.5mm (3/8") 6V
2921923043	230	1	Impeller (-II) - 1.0 THP (1.5 HP SPL) 98 x 9mm (3/8") 6V
2921923193	230	1	Impeller (-III) - 1.5 THP (2.0 HP SPL) 106 x 9mm (3/8") 6V w/ Insert

Order#	Drawing #	Qty Required	Description
2921923094	230	1	Impeller (-IV) - 2.0 THP (2.5 HP SPL) 111 x 9mm (3/8") 6V w/ Insert
2921770007	413	1	Union With Nut And O-ring (1.5") - Suction (-I)
2921770001	413	1	Union With Nut And O-ring (2.0") - Suction (-II, -III, -IV)
7300313001	100	1	Union With Nut And O-ring (1.5") - Discharge (-I)
7300313000	100	1	Union With Nut And O-ring (2.0") - Discharge (-II, -III, -IV)
2500300917	100 & 413	1	1.5" Union Package CPL - Suction/Discharge
2500300920	100 & 413	1	2.0" Union Package CPL - Suction/Discharge