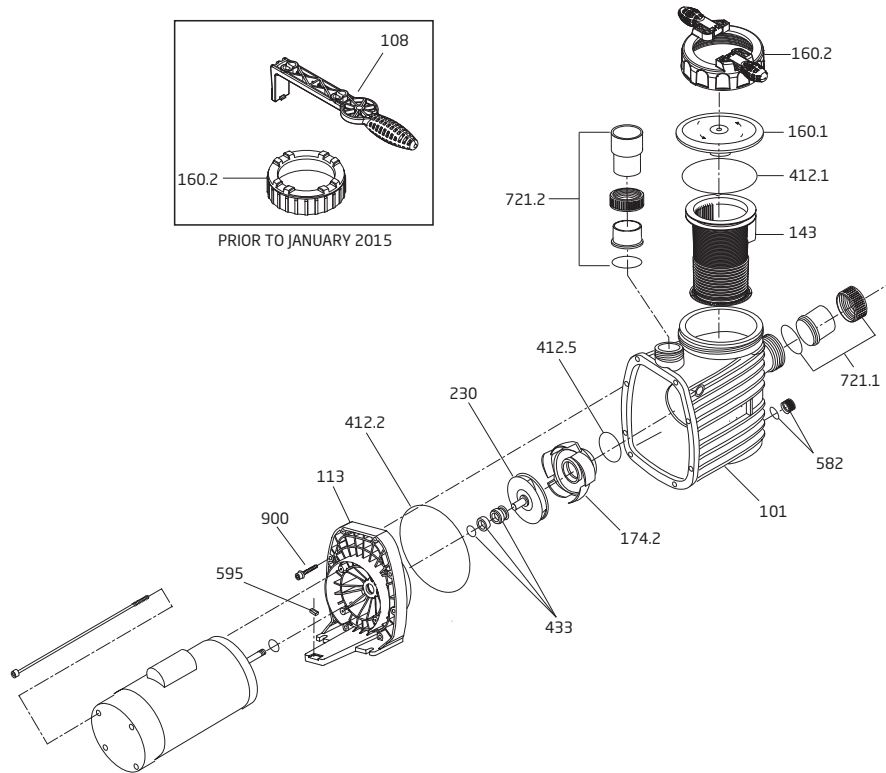


# Model ES90

Self-Priming Swimming Pool Pump



Model ES90-I, ES90-II, ES90-III, ES90-IV & ES90-II VSP



Order#	Drawing #	Qty Required	Description
2901116010	160.1	1	Lid - Clear
2921116012B	Not Shown	1	Lid - Clear w/ LED Light
2921116022	160.2	1	Lid - Lock Ring w/ Handles
2921141210	412.1	1	O-ring - Lid 137 x 5mm
2901114300	143	1	Basket
2921110108TB	101	1	Casing - Thru Bolt
2901158200	582	1	Drain Cap 3/8" w/ Gasket
2920889410	894.1	3	Lego Spacer
2991000120	900	8	Screw - Casing 1/4"-20 x 2.5"
2991300035	900	8	Nut - Serrated Flange 1/4"-20
2991000012	900	8	Washer - Flat #12
2920141210	412.5	1	O-ring - Diffuser 90 x 5mm
2921117412	174.2	1	Diffuser
2921923091	230	1	Impeller (-I) - 0.75 HP S.F. 1.0 99 x 4.5mm 6V
2921923043	230	1	Impeller (-II) - 1.0 HP S.F. 1.0 98 x 9.0mm 6V
2921223040	230	1	Impeller (-II VSP) 1.1 THP 115 x 9mm (3/8") 6V
2921923193	230	1	Impeller (-III) 1.5 HP S.F. 1.0 106 x 9mm (3/8") 6V w/Insert
2921923094	230	1	Impeller (-IV) 2.0 HP S.F. 1.0 111 x 9mm (3/8") 6V w/Insert

Order#	Drawing #	Qty Required	Description
2921606204	433	1	Mechanical Seal (5/8") - Carbon/Ceramic
2921141222	412.2	1	O-ring - Casing 190 x 6mm
2921116112	113	1	Flange/Seal Housing
2921770005	721.1	1	Union Package - Suction
2500300902	721.2	1	Union Package - Discharge
2500300914	721.1 & 721.2	1	Union Package - Suction/ Discharge

**Parts Below Are Unique to the Model ES90 Shipped Prior to 01/2015**

2901116020	160.2	1	Lock Ring - Lid
2921157700	108	1	Spanner - Lid ( <i>Optional Part</i> )

**Go Kits For The Model ES90**

SPK-ES90-GOKIT	Not Shown	1	Seal GoKit*
----------------	-----------	---	-------------



\* Please Note: That the Seal Go Kits includes the following items: Mechanical Seal, & O-rings.